

Ceramic tube set TSC

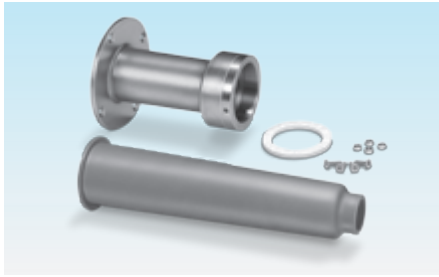
Product brochure · GB
7.2.25 Edition 09.08

krom
schroder

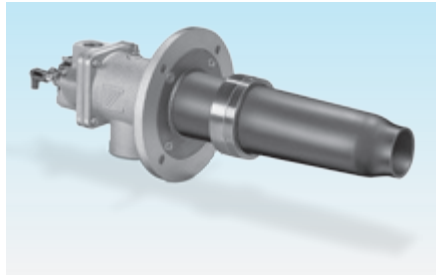


- Long service life, owing to high-quality SiC material
- Diverse possible applications thanks to high temperature resistance up to 1500°C
- Resistant to changes in temperature
- Low maintenance thanks to resistance to corrosion and dimensional stability
- Installation facilitated by low weight
- Less expensive than the installation with burner quartz
- Suitable for new systems and modernisation of existing systems thanks to individual length adjustment

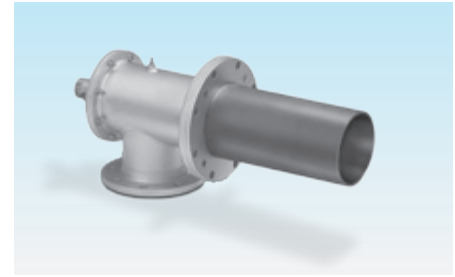




TSC tube and extension set for individual burner length adjustment to suit the furnace wall thickness



TSC tube with extension set on burner BIC



TSC tube on burner ZIC

Application

For use in conjunction with the Kromschroder burners BIC, BICA or ZIC in industrial furnaces and firing systems in the iron and steel industry in the precious, non-ferrous and light metal sectors, as well as in the plastics, fibre and paper industries or in thermal incineration installations, as well as driers and hot-air generators.

The burner can be used in conjunction with the ceramic tube set TSC in furnaces with brick lining or ceramic fibre lining. No burner quarl is required to serve as combustion chamber.

Technical data

Ceramic tube material:
silicon carbide (SiC),
sintered silicon carbide (SSiC) for certain burner sizes on request.

Max. application temperature:
SiC = 1500°C,
SSiC = 1600°C.

Selection

Ceramic tube set TSC selection table

	50	65	80	100	125	140	A	B	020..	-200	-250	-300	/35-	/135-	Si-1500
TSC	●	●	●	●	●	●	●	●	●	●	●	●	●	●	●

● = standard, ○ = available

Order example

TSC 80B040-250/35-Si-1500

Ceramic tube set TSC type code

Code	Description
TSC	Ceramic tube set
50-200	Designed for burner size
A	Shape Cylindrical
B	Tapered
020, 025, 028, 033, 035, 040, 048, 050, 065, 066, 070, 075, 085, 100, 120, 127, 154, 180	Outlet dia. [mm]
-200, -250, -300	Tube length [mm]
/35- /135-	Position of burner head
Si-1500	Ceramic tube material

Detailed information on this product

www.docuthek.com

Contact

www.kromschroeder.com → Sales

Elster GmbH
Postfach 2809 · 49018 Osnabrück
Strothweg 1 · 49504 Lottje (Büren)
Germany

T +49 541 1214-0
F +49 541 1214-370
info@kromschroeder.com
www.kromschroeder.com
www.elster.com

Kromschroder, a product
brand of the Elster Group



We reserve the right to make technical modifications
in the interests of progress.

Copyright © 2007 Elster Group
All rights reserved.